



WESTSOUND  
WATERSHEDS COUNCIL  
Agenda

---

West Sound Watersheds Council (WSWC)  
August 14, 2013 9:00 AM - 12:00 PM  
Kitsap Administration Building, Commissioners Chambers

- 9:00 Introductions, review agenda
- 9:15 Puget Sound Partnership topics  
-Near Term Actions being updated for West Central LIO  
-Steelhead recovery planning  
→ -PSAR capacity funding – scope of work, etc.  
-PSAR/SRFB 2013 projects update
- 10:30 Break, move cars
- 10:45 Minter Creek Regional Alliance
- 11:05 Round the table announcements and information sharing
- Noon Adjourn

Future meeting dates (9-noon) to hold:

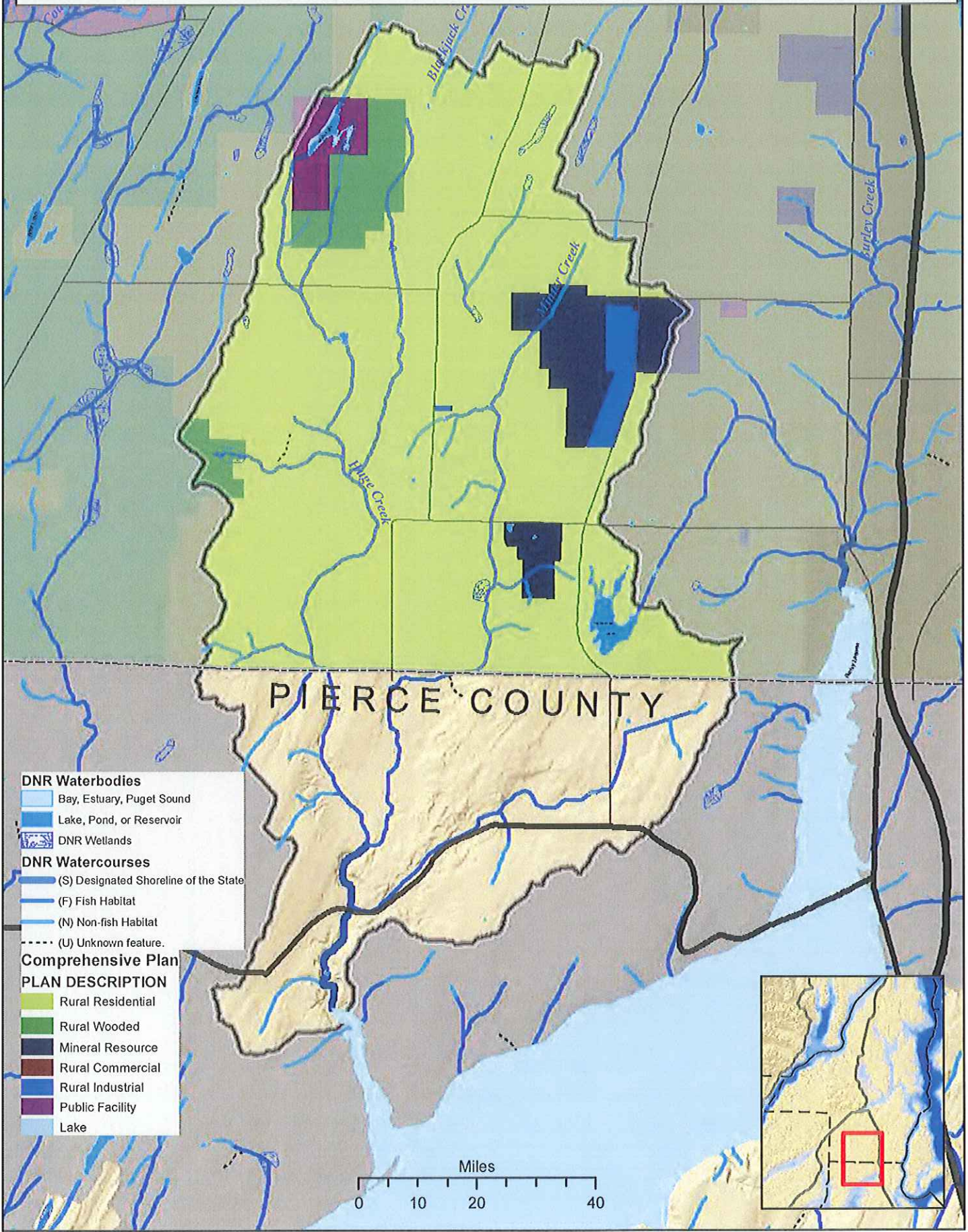
September 11 (Suquamish or Poulsbo?)  
October 16  
November 13

WSWC Aug. 14

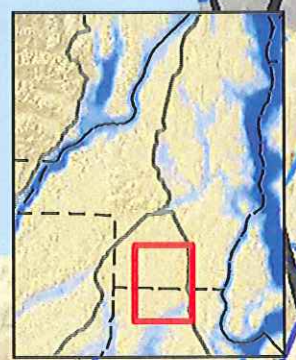
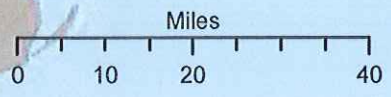
Port Orchard

- 1 Kathy Peters
- 2 Hulene Bernhart
- 3 Renee Scherduik
- 4 Teresa Sjostrom
- 5 Renee Johnson
- 6 Arvo Bergstrom left early
- 7 Tom Ostrom.
- 8 Jamie Glasgow
- 9 Tristan Peter-Contesse
- 10 Lynn Walls
- 11 Barbara Ann Smolko
- 12 Patty Charnas left early
- 13 Mike Parton

# Minter Creek Watershed - Comprehensive Plan Designations



- DNR Waterbodies**
- Bay, Estuary, Puget Sound
  - Lake, Pond, or Reservoir
  - DNR Wetlands
- DNR Watercourses**
- (S) Designated Shoreline of the State
  - (F) Fish Habitat
  - (N) Non-fish Habitat
  - (U) Unknown feature.
- Comprehensive Plan DESCRIPTION**
- Rural Residential
  - Rural Wooded
  - Mineral Resource
  - Rural Commercial
  - Rural Industrial
  - Public Facility
  - Lake



**MEDIA CONTACT:**

Heather Ballash  
Washington Department of Commerce  
[heather.ballash@commerce.wa.gov](mailto:heather.ballash@commerce.wa.gov),  
(360) 725-3044

**IMMEDIATE RELEASE**

**Thursday, August 8, 2013**

State Partnering With Local Counties to Improve Minter Creek  
Watershed: Information Open House August 27, 2013

The Washington State Department of Commerce, with funding from the National Estuary Program, is partnering with Kitsap and Pierce Counties to address regional planning for the Minter Creek watershed basin. The purpose of this effort is to look at land use within the watershed basin, and provide recommendations for upcoming Comprehensive Plan updates. This is part of the counties' efforts to implement the Puget Sound Partnership's Action Agenda to restore Puget Sound.

The open house will take place at Gateway Park on August 27, 5:00 – 7:00 p.m., and is intended for the public to learn about the Minter Creek basin.

Gateway Park is located on the Key Peninsula about 3.2 miles west of Purdy on Highway 302/Gig Harbor-Longbranch Highway. The entrance is located at 10215 State Route 302 NW, on the north side of the highway 0.2 miles west of Creviston Drive NW.

For more information and directions, go to [www.EZview.wa.gov](http://www.EZview.wa.gov) or contact: Heather Ballash, Washington Department of Commerce, [heather.ballash@commerce.wa.gov](mailto:heather.ballash@commerce.wa.gov), (360) 725-3044.

*The Washington State Department of Commerce is committed to providing equal access for all attendees of this event. Persons with a disability desiring an accommodation are encouraged to contact Heather Ballash. TTY number: 360-586-0772*